



EvoPlus

Double Hung Window



**MAXIMUM VIEW,
UNLIMITED POSSIBILITIES.**

1300 ALSPEC (1300 257 732)
alspec.com.au

alspec[®]
EVERYTHING ALUMINIUM
& HARDWARE

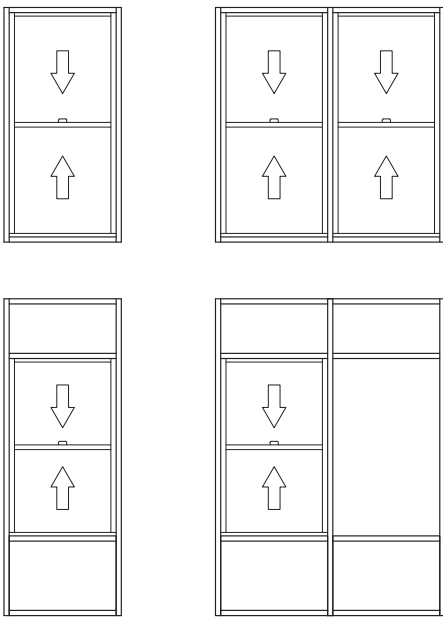
EvoPlus Double Hung Window

The EvoPlus Double Hung Window offers a first-rate level of design by allowing the integration with commercial frames ecoFRAMEplus 101.6mm and McArthur Evo 101.6mm, to cater for a wide range of residential and commercial applications.

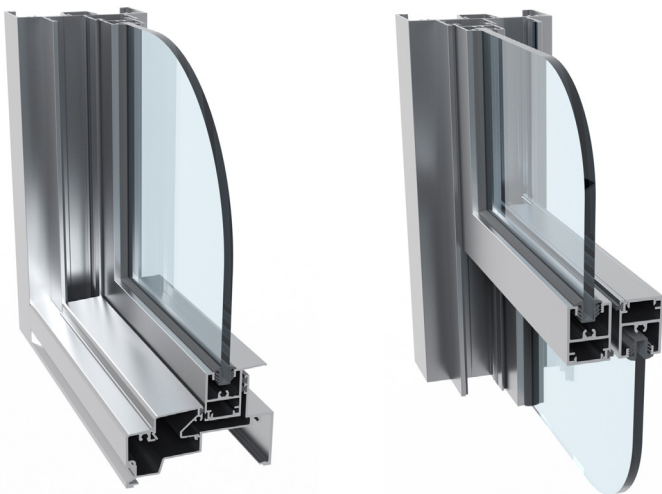
The EvoPlus Double Hung Window offers the flexibility of single and double glazing options. The EvoPlus Double Hung Window integrates a number of design initiatives unique to Alspec® such as the proprietary locking and drainage systems.

Developed specifically for multi-storey use and architecturally designed housing EvoPlus Double Hung Window windows offer a superior finish.

Typical Configurations



CAD Cross Sections



Key Features

- Commercially designed to suit 101.6mm
- Developed specifically for multi-storey residential, schools and architecturally designed housing
- 4mm up to 10.38mm monolithic glass and up to 18.5mm double glazed units
- Superior weather performance
- Minimal processing, cost effective and simple fabrication

Technical Specifications

| Frame Dimensions | |
|-----------------------------|--------------------------|
| Option 1 | 101.6mm x 44.5mm (W x H) |
| Option 2 | 101.6mm x 50mm (W x H) |
| Maximum Recommended Sizes | |
| Max Sash Height | 1191mm |
| Max Sash Width | 1200mm |
| Max Sash Weight | 20kg |
| Maximum Product Performance | |
| SLS (Pa) | 1000 |
| ULS (Pa) | 5000 |
| Water (Pa) | 300 |
| Thermal Performance | |
| Uw range SG | 4.9 - 6.4 |
| SHGC range SG | 0.31 - 0.57 |
| Uw range DG | 3.7 - 4.5 |
| SHGC range DG | 0.22 - 0.53 |
| Glazing Details | |
| Single Glazed | 4 - 10.38mm |
| Double Glazed | 17.5 - 18.5mm |
| Compatible Systems | |
| ecoFRAMEplus 101.6mm | |
| McArthur Evo 101.6mm | |